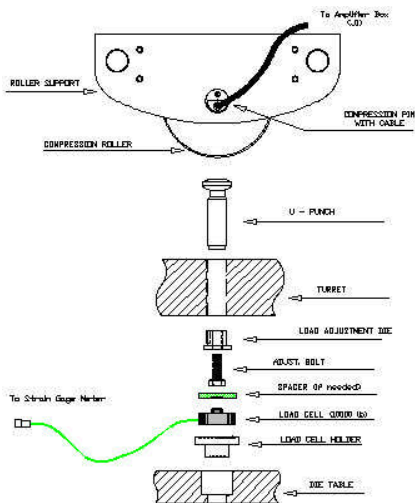
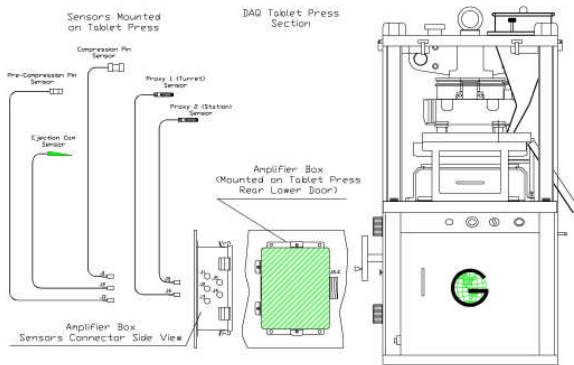




P.O.Box 10837
 New Brunswick, NJ 08906-9998
 Tel: 732-819-0381 Fax: 732-777-5129 E: sanni@globepharma.com
www.globepharma.com, www.maxiblend.net, www.cgmpvalve.com

TABLET PRESS INSTRUMENTATION PACKAGE

GlobePharma's Tablet Press Instrumentation Package facilitates measurement, recording, storing, analysis and printing of pre-compression force, compression force, ejection force, machine speed, dwell time, etc.



This package includes the following:

Enclosure:

Dimensions: 58"H x 25"W x 26"D

NEMA-12 construction using welded 12-gauge steel
Flush-mount sliding key-board tray and housing with folding tray for mouse pad.
Three adjustable vibration isolation shelves.
Tempered glass 17" /19" monitor window
Front and rear doors with locking latches
Three-inch casters
Nine-foot power cable with built-in surge suppressor
Split panel for easy exit of cables
Two pre-installed cooling option openings

Computer, Monitor & Printer:

Dell Optiplex 320, Pentium 4 processor, 3 Ghz, 80GB, CD burner
Windows XP Professional
17" flat screen monitor
Ink-jet printer

Data Acquisition System:

The state of the art Data Acquisition System, based on Labview software, measures, records, stores and processes pre-compression force, compression force, ejection force, dwell time, speed (rpm) of the machine, area under the curve, etc.. The readings of average force, coefficient of variation of the forces, rpm of the machine are constantly updated and displayed on the screen. The screen can be reset if a run has to be rejected and started again. The force and proximity switch impulses can be seen on the screen continuously.

The user can input data such as date, experiment number, title, comments, etc. The data can be stored and processed for analysis of dwell time, area under the curve, contact times, etc. The physical parameters of the tablets, such as hardness, friability, disintegration time, etc., may be input at a later time and the software will allow graphing of these parameters against the compression force. The data and the graphs can be printed out.

Hardware:

The sensors (load cells) are NIST traceable and all the electronics work is done very professionally with all components from top quality US companies.