

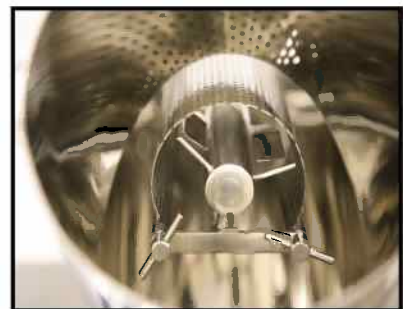


P.O. Box 7307, North Brunswick, NJ 08902-7307

Tel: 732-819-0381 Fax: 732-777-5129 E: sanni@globepharma.com

www.globepharma.com, www.maxiblend.net

MAXIBLEND™ LAB BLENDER



GlobePharma's new MAXI-BLEND™ Lab Blender is a self-contained tumble blender intended for blending of powders in V-shells and bins. As the V-shaped shell rotates, the tumbling action brings about homogeneous mixing of the ingredients. An integral intensifier drive helps to achieve homogeneous mixing of small dose ingredients. Liquid addition is possible through the high speed intensifier bar. PLC electronic controls permit precise control of the blending process and reduce maintenance problems. When the blender stops the shell is automatically in the discharge position. This blender accommodates 0.5qt, 1qt, 2qt, 4qt, 8qt and 16qt interchangeable V- shells and 4qt, 8qt and 16qt bins and double cone shells made of 316 SS. A new patent pending SIFT-N-BLEND™

attachment, which screens the materials inside the blender itself while blending, is also available. Safety-interlocked guard system protects the operator from the rotating shell. The drive station is available in fixed speed or variable speed.

SPECIFICATIONS:

Weight Empty:	190 lbs
Blender Shell Volume:	0.5, 1, 2, 4, 8, and 16 quarts
Blender Shell Speed (Fixed Speed Version)	25 rpm (nominal)
Blender Shell Speed (Variable Speed Version)	3-25 rpm
Intensifier Bar Speed: (applicable models)	3,450 rpm
Maximum Charge Density:	
16 quart intensifier bar model:	125 lbs / cu. ft.
4, 8 quart intensifier bar models:	140 lbs / cu. ft.
4, 8, 16 quart pin bar models:	200 lbs / cu. ft.
2, 4, 8, 16 quart without bar Models:	200 lbs / cu. ft.
Shell Drive Motor:	0.3 hp, 1 Phase, TEFC
Intensifier Drive Motor:	0.75 hp, 1 Phase, TEFC
Electrical:	115 V/230V, 1 Phase, 50/60 Hz, 15/7.5 amps, grounded.

DIMENSIONS: 41”L x 19.5”W x 21.5”H

MATERIALS OF CONSTRUCTION :

- Drive Station Housing : Clear Anodized Aluminum Panels
- Safety Enclosure : Polycarbonate
- V-Shells, Bins and Double Cone Shells : 316 Stainless Steel
- Drive Shaft : 316 Stainless Steel
- Intensifier Bars : 316 Stainless Steel
- Cart : 304 Stainless Steel