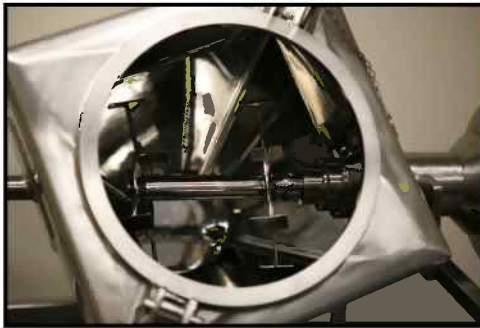




P.O. Box 7307, North Brunswick, NJ 08902-7307
Tel: 732-819-0381 Fax: 732-777-5129 E: sanni@globepharma.com
www.globepharma.com, www.maxiblend.net

MAXIBLEND® 1-2 PILOT-SCALE POWDER BLENDER WITH INTERCHANGEABLE SHELLS



GlobePharma's new MAXIBLEND® 1-2 PILOT-SCALE BLENDER is an all stainless-steel self-contained tumble blender for use with powders.

FEATURES:

- Interchangeable shells of pharmaceutical finish.
- Can accommodate both V-shells, double cones and bins of 1 and 2 cu.ft. working capacity.
- All stainless steel construction and on casters
- Easy loading of materials into the shells.
- PLC controls
- Optional high-speed solids intensifier bars for both V-shells as well as bins
- Optional portable safety guard and other standard safety features
- Blender automatically stops at home position after blending is completed.
- Optional variable speed shell and intensifier bar.
- Optional sanitary butterfly valve
- Optional stainless steel cart to transport the shell and for easy loading.
- Easy cleaning of shells

SPECIFICATIONS:

Shell working capacities: 1 and 2 cu.ft.

Shell speed: Fixed speed – 18 rpm, Variable speed up to 25 rpm.

Intensifier bar speed: 3300 rpm

Electrical: 208, 3 Phase, 60Hz.

Materials of Construction:

Enclosure, the clamp, the shaft and the caster hardware are all made of 304 SS.

V-Shells are made of 316L SS

cGMP Valve: 316L SS with #4 finish on the valve body and #7 finish on the vane, valve lining is made of FDA approved platinum-cured silicone rubber.

Shell Gaskets: FDA approved white Nitrile rubber

Safety guard: Frame is made of aluminum and the panels are made of ½" thick acrylic.

Shell finish: Outside – Ra about 20 micro inches (= #4 finish); inside – Ra about 12 micro inches (between #4 finish and #7 finish).

Dimensions of the machine without the guard: 37" W x 74" L x 54" H

Dimensions of the machine with the guard installed: 60" W x 90" L x 62.25" H

Dimensions of the guard in retracted shape: 3' W x 5' L x 62.25" H

Floor space needed with guard on: 14' x 12'